

Integrating Access to Resources Across Domains: Metadata for Images

J. Trant
Collections and Standards Development
Arts and Humanities Data Service
<http://ahds.ac.uk>

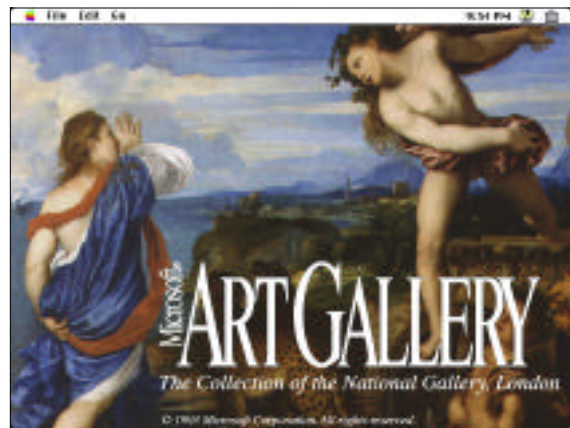
NOTE: now jtrant@archimuse.com

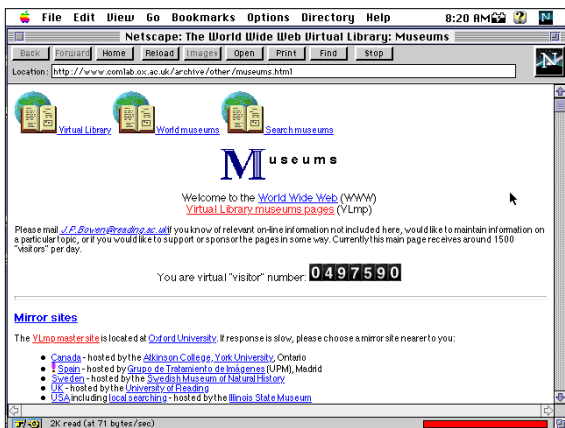
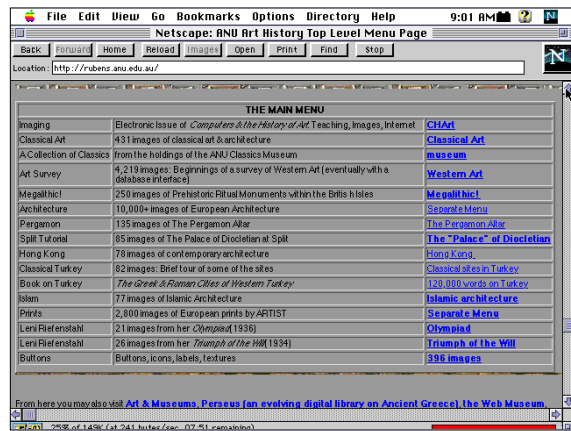
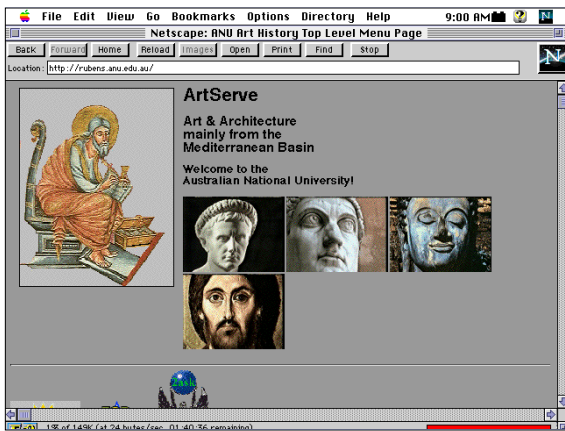
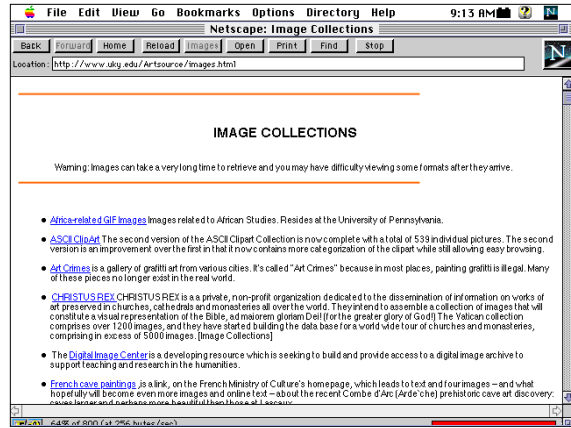
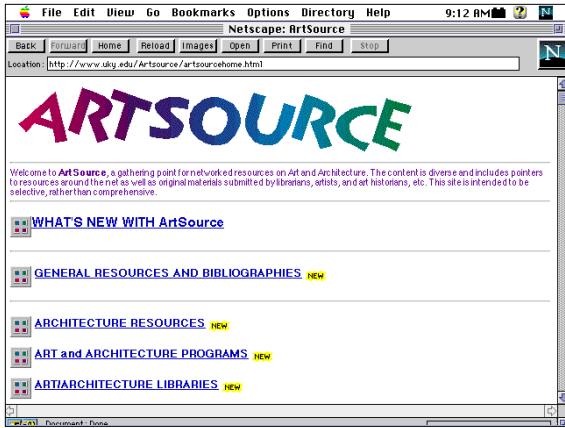
Where do you find images?

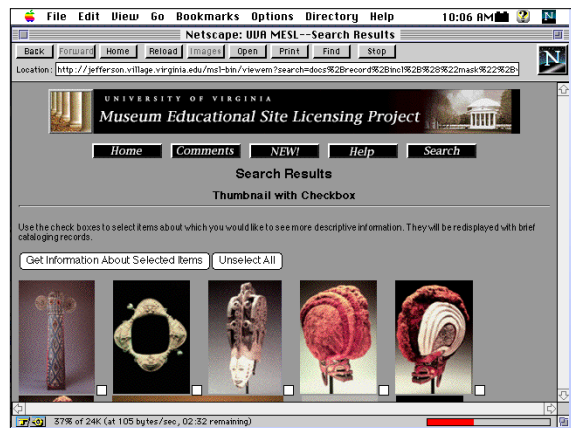
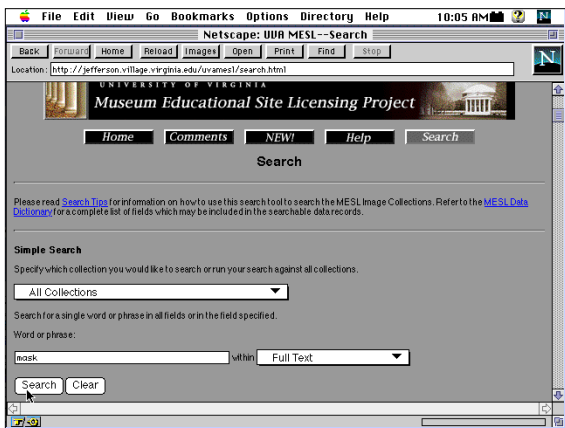
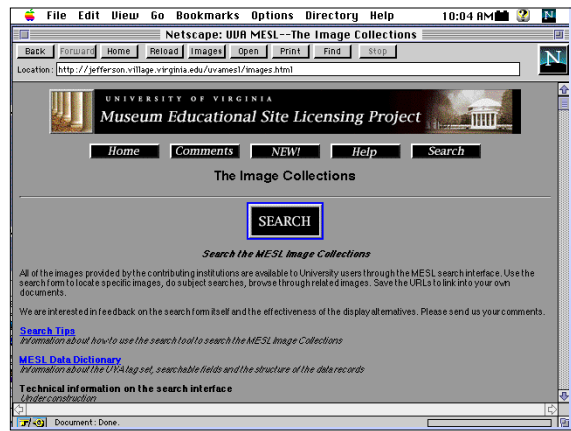
- Interactives in Galleries
- CD-ROM Publications
- Institutional Databases
- WWW Sites
- Stock Photography Houses
- Scholarly Databases

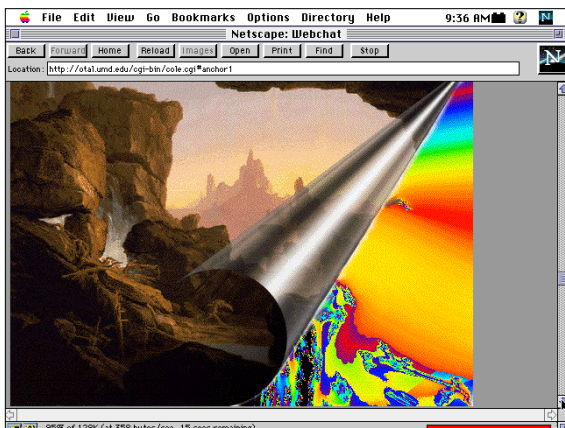
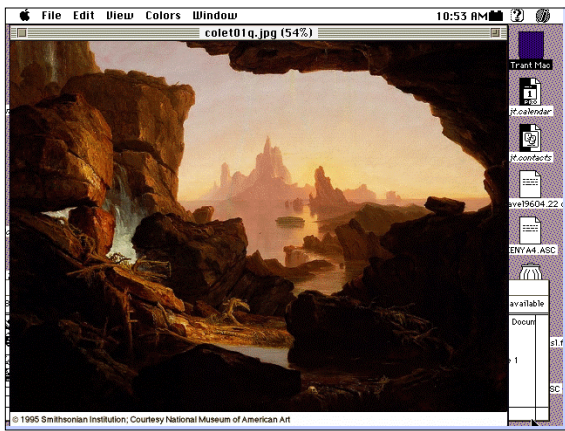
How do you find images?

- Publications
- Indexes
- Institutions









Describing Digital Images

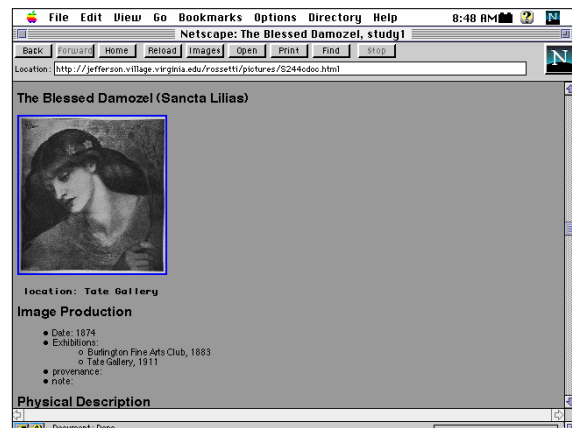
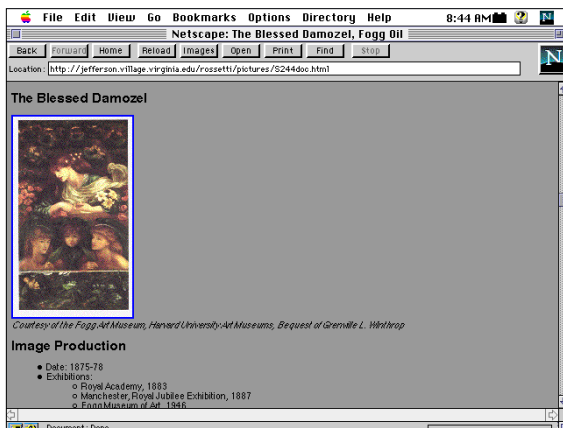
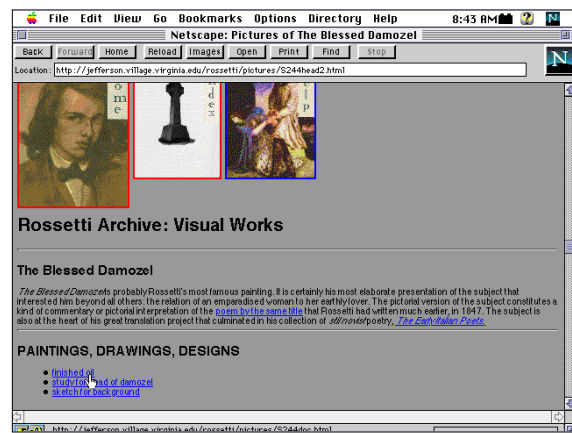
- **Work Depicted**
 - description of content
- **Depiction**
 - perspective, position, orientation, alternate views, different versions of image
- **Rights and Restrictions**
 - copyright of original, surrogate image, digital image
 - restrictions on use

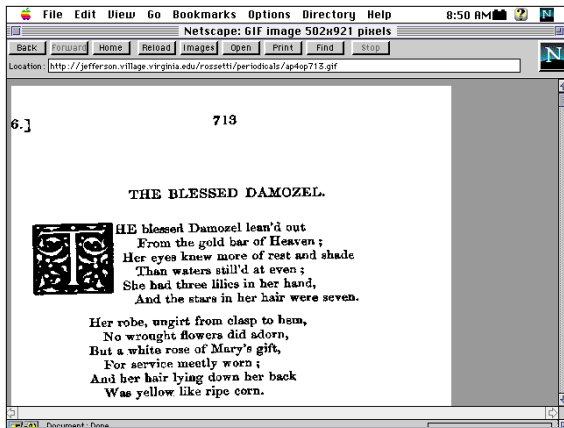
Describing Digital Images

- **Image characteristics**
 - type, format, compression, pixel dimensions, bit-depth, colour metric (RGB/CMYK), colour management
- **Image source**
 - original digitized, source type, identification, institution
- **Scanning process**
 - light source, resolution, dynamic range, type of scanner, date, scanning personnel, image manipulation, digital signatures

Image Metadata Standards

- **Describing Content**
 - AITF *Categories*, CIDOC *Information Categories*, MDA *Spectrum*, CIMI DTD, Dublin Core, AACR2 & MARC VIM and AMC formats
 - AAT, ULAN, LCSH
- **Describing Surrogate Images**
 - VRA Data Standard
- **Describing Digital Images**
 - standards needed





Beyond Discovery to Image Use

- **Retrieval**
 - textual indexing
 - pattern recognition/matching (QBIC, WebSEEk)
- **Display**
 - file formats and viewers
 - colour management, quality
- **Analysis**
 - sort, group, annotate, manipulate